

## **Agenda**

1. Review timings against project plan
2. Review planning conditions
3. Traffic
4. Footpath along New Road
5. Noise
6. Security
7. Restoration
8. Communications
9. Complaints
10. Next meeting

### **1 Review timings against project plan**

Discharge of Planning Condition 18 regarding breeding birds is anticipated 28<sup>th</sup> April 2009. As a result, the overall appraisal drilling programme target dates have been affected. Pending approval of Condition 18, site preparation works will commence 5<sup>th</sup> May 2009 with some deliveries possibly taking place between 29<sup>th</sup> April and 1<sup>st</sup> May.

Drilling rig mobilisation is expected to commence mid June 2009. Permission to drill the appraisal well(s) was granted by DECC on 14<sup>th</sup> April 2009.

Refer Appendix I for the current target dates.

### **2 Review planning conditions**

The planning permission was granted with 36 conditions. All conditions will be managed and monitored by Star Energy.

Since the Albury Working Group meeting of 23<sup>rd</sup> March 2009, all subsequent planning condition submissions have been copied to Joanna Cadman, Clerk to Albury Parish Council, for circulation to the Albury Working Group.

4 conditions require notifications to SCC:

<i>Condition</i>	<i>Notification Required</i>	<i>Submitted</i>	<i>Notes</i>
2	Within 7 days of commencement of site preparation.	-	Submission anticipated week commencing 4 <sup>th</sup> May 2009.
4	Within 7 days of commencement of drilling.	-	Submission not yet required.
5	Within 7 days of commencement of flaring.	-	Submission not yet required.
36	Once the overall restoration planting and seeding is complete.	-	Submission not yet required.

7 conditions require submissions to SCC:

<i>Condition</i>	<i>Key Issue</i>	<i>Submitted</i>	<i>Approved</i>	<i>Notes</i>
11	Protection of the water environment	due w/c 27/4/09	-	Details re storage of oils, fuels or, chemicals submitted for site preparation only. Details for drilling and testing will be submitted in due course.
14	Traffic Management Plan (TMP)	17/4/09	n/a	No further action required. Star Energy and their Contractors will proactively manage the TMP.
18	Breeding Birds	27/2/09	-	Approval anticipated 28/4/09. Site preparation works due to commence one week later.
19	Badgers	17/2/09	24/2/09	No further action required.
20	Bats	17/2/09	-	Approval anticipated 20/4/09 but not yet received. Condition does not affect any of the appraisal drilling works.
22	Newts	24/3/09	-	Approval anticipated late May. Emptying of the perimeter ditch will take place shortly thereafter.
24	Car Park Restoration	-	-	To be submitted to SCC for approval within one month of commencement of site preparation works.

## **3 Traffic**

### **3.1 Drilling Rig Trailer**

The drilling rig trailer traffic route will be provided to the Albury Working Group and has yet to be confirmed. It is anticipated that this route will be available early June.

### **3.2 Traffic Management Plan**

Star Energy submitted the Traffic Management Plan (Rev 2) to Surrey County Council on 17<sup>th</sup> April 2009. Key voluntary improvements made to the TMP in response to the Albury Working Group were to:

- manage project HGVs to avoid them passing on New Road
- discourage HGV movements during school bus run hours and morning/evening 'rush' hours

In addition, the revised predicted HGV numbers to the Wellsite will be well below the average of 22 HGVs per day, and very significantly below the maximum of 77 HGVs per day, anticipated in the planning application for the civils site preparation phase. Refer Appendix 2 for details.

### **3.3 Photographic Surveys**

The photographic survey requested by the Albury Working Group along New Road, the section of the A248 between New Road and the A25 and the A248/A25 junction is expected to take place on Thursday 30<sup>th</sup> April. John Brockwell from the Albury Working Group will also attend.

## **4 Footpath along New Road**

A site meeting at the Albury Park Wellsite bellmouth entrance took place on Friday 3<sup>rd</sup> April 2009. Attendees were Guildford Borough Council Councillor Roy Hogben, SCC Rights of Way Officer James Browne, Albury Estate Land Agent Michael Baxter and, Star Energy Project Manager Sophie Tucker.

Roy Hogben confirmed that the idea of a footpath along New Road was not as a permanent feature but as a temporary requirement during the construction works of the pipeline for the Albury Gas Storage project.

The attendees agreed that:

- construction of a new footpath along New Road would not be necessary for such a temporary duration (pipeline construction will take no longer than 6 months)
- James Browne and Sophie Tucker would walk Bridleway 240 / Footpath 242 and advise accordingly

James Browne advised via email on 17<sup>th</sup> April 2009:

1. Having inspected the bridleway in your [Sophie Tucker] company I am convinced there are other Public Rights of Way in the Parish that are in more urgent need of attention. In my opinion the surface condition is at a standard suitable for equestrian use, which is the extent of the County Council's liability for maintenance. The fact that it is narrow in places is a natural limitation on the route.

Any unsealed surface put down to fill in the slight gully in the surface would end up at the bottom of the slope in a fairly short space of time. This can be demonstrated by looking at the ditchline that I had cleaned out from the end of Church Lane two years ago. It runs alongside the bridleway and is now largely full of silt and debris again!

2. A very effective & practical solution to aid people getting from the village up onto the heath would be to remove the two stiles on Public Footpath 242 Albury, which runs parallel with the bridleway on top of the bank. Having done some research, it does not appear as though the stiles are actually lawful structures on this particular footpath and are therefore obstructions on the highway (a footpath is a form of highway). The footpath is also annexed from the farmers field as it has been fenced off, so the stiles would not be licenced for stock control purposes. This route has a gradual gradient and is well drained.

Without the stiles, the footpath would become more accessible to less agile members of the parish and of course walkers from further afield. This is something that I can speak to Michael Baxter about as it is Albury Estate land.

## **5 Noise**

There is no change to the noise monitoring plans since the last Albury Working Group meeting. Noise monitoring will commence upon start of start site preparation works and be in place until completion of the drilling and testing phases.

## **6 Security**

Star Energy have advised PC Nick Sharpe's details to the civils site preparation contractor. Star Energy await confirmation regarding any site specific security measures.

## **7 Restoration**

There is no change to the restoration plans since the last Albury Working Group meeting.

## **8 Communications**

The communications programme is progressing as follows:

- a leaflet was distributed throughout the village on 14<sup>th</sup> April 2009 with additional copies left in the village Post Office
- personal contact is being maintained with residents at The Bungalow and Keepers Cottage
- a 24-hour complaint line is available
- the general Star Energy information line continues to be available in work hours
- the project website will be updated in line with other information and will include progress reports
- a site sign will erected at the site entrance which includes complaints line number
- leaflet to be used as a means of briefing the Surrey Advertiser
- parish council newsletter updates
- site visits at key stages to be planned
- village briefing will take place at 7.30pm on Monday 27<sup>th</sup> April 2009 - this has been promoted via the leaflet posted on 14<sup>th</sup> April and through APC channels.

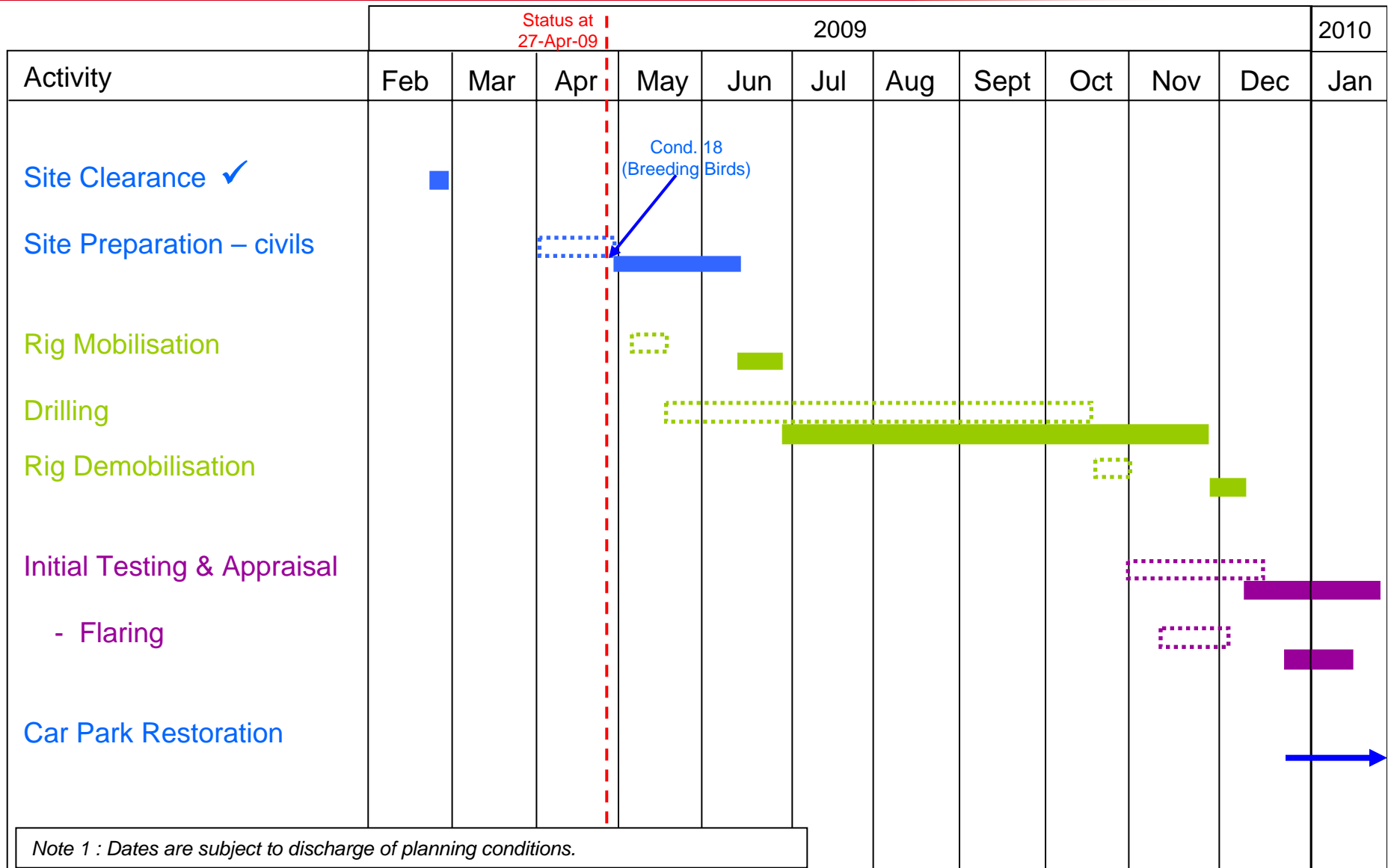
## **9 Complaints**


The complaints procedure is now in place at Star Energy and all relevant staff have been briefed.

## **10 Next meeting**

Late May or early June for the next meeting is suggested as suitable timing.

# Appendix 1 - Appraisal Drilling target dates



	<p align="center"><b>Albury Park Wellsite Appraisal Drilling Project</b> Albury Working Group – Interim Update 21<sup>st</sup> April 2009</p>	<p align="right">Page 1 of 1</p>
---	---	----------------------------------

## Civils Site Preparation – HGV Update

At the meeting of the Albury Working Group and Star Energy on 23<sup>rd</sup> March 2009, more detailed HGV figures were requested with regard to the civils site preparation phase.

Star Energy plans to commence works at the Wellsite on Tuesday 5<sup>th</sup> May 2009, possibly with some deliveries the week before, pending Surrey County Council’s approval of Planning Condition 18 regarding breeding birds.

Table 1 below summarises the revised predicted daily HGV deliveries to the Wellsite during the six-week civils site preparation programme as well as some possible deliveries the week before. These figures have been prepared by the approved civils contractor who will be carrying out the civils works. The below figures are approximate only, taking into account concrete, plant, stone and accommodation deliveries and collections, as well as muck-away lorries and day-to-day materials deliveries. Saturday working is not anticipated but if this becomes necessary no HGVs are expected.

The below figures demonstrate that the revised predicted HGV numbers to the Wellsite will be well below the average of 22 HGVs per day, and very significantly below the maximum of 77 HGVs per day, anticipated in the planning application.

<b>Week Commencing</b>	<b>Week No</b>	<b>Mon</b>	<b>Tues</b>	<b>Weds</b>	<b>Thurs</b>	<b>Fri</b>	<b>Sat</b>
<b>27-Apr-09</b>	<b>-1</b>	-	-	4	3	1	0
<b>04-May-09</b>	<b>1</b>	Bank Hol	3	3	3	3	0
<b>11-May-09</b>	<b>2</b>	2	4	4	4	4	0
<b>18-May-09</b>	<b>3</b>	2	2	2	3	2	0
<b>25-May-09</b>	<b>4</b>	Bank Hol	1	3	1	1	0
<b>01-Jun-09</b>	<b>5</b>	1	1	4	6	6	0
<b>08-Jun-09</b>	<b>6</b>	6	6	6	3	3	0

*Table 1: Anticipated daily HGV’s to Albury Park Wellsite during the Civils Site Preparation Phase*